

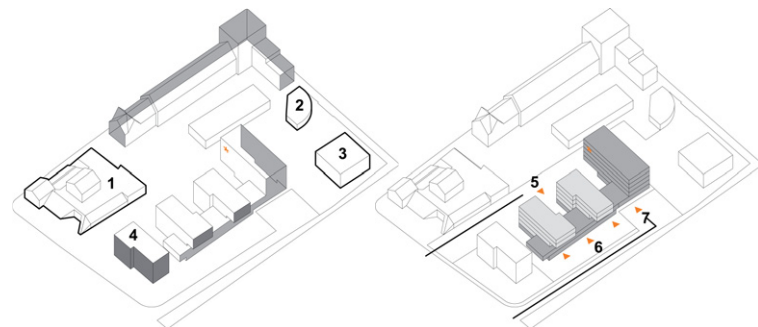
NU2I Centre - Plot 4.4



01

NU2I Centre - Plot 4.4 – Neu-Ulm / 2009

Project	ZBN
Client	City of Neu-Ulm Procon Object Neu-Ulm GmbH
Status	Invited Competition 2nd Prize
Site	4.176 m ²
Gross Building Area	7.500 m ²



02

03

The plot is a part of an urban block that is situated within the transition from the perimeter blocks of the inner city to the open building types in the South. Its heterogeneous fabric is coined by the partly complete perimeter block buildings at the northern edge, listed remains of the former fortification to the West and the East, a planned art gallery and a slab-like planned building.

The new building completes the block, restructures and clarifies its built parts and elements. The building to the West is included. Two housing slabs rest on a two-story base that rises up to six levels towards the art gallery and provides a spatial frame for the art gallery in interplay with the buildings to the North.

Living and working are intertwined without constraining each other. Housing is oriented towards the inner block yard. Shops, small business and offices are located at the southern edge. Trees form spatial accents in the block yard. A second row of trees along the cul-de-sac overrides the turning area and leads with the existing trees alley-like to the art gallery.



04

- 01 View to the East along the cul-de-sac street
- 02 Special elements of the block (1)(2)(3), integration of (4) by the comb-like structure, spatial frame for the exhibition buildings (2) and (3)
- 03 (5) Housing (6) commerce/ shops (7) offices/ services
- 04 Ground floor - small commerce and shops