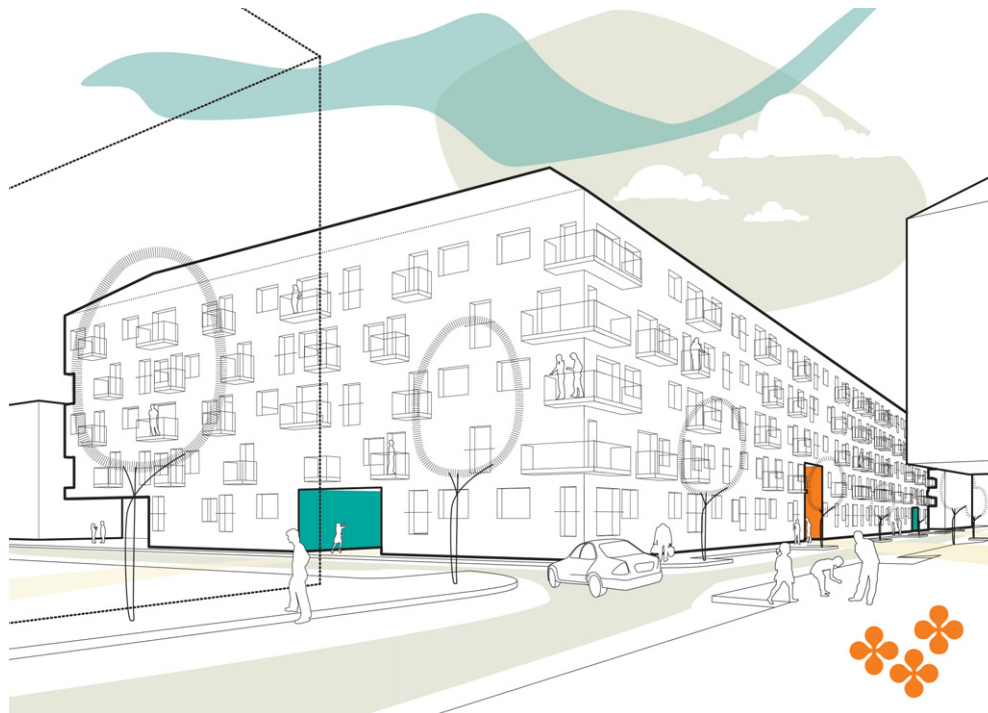
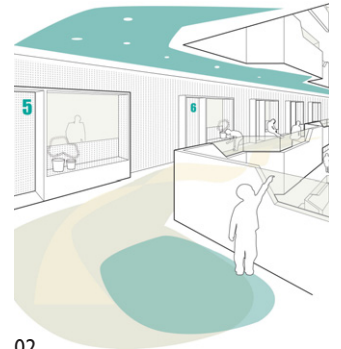


Housing Sillblock



01



02



03

The task is to replace the existing block dating from the interwar period with its very small flats with a new building containing approx. 130 social flats that range in five sizes between 45 and 95 sqm. Besides the preservation of the four lime trees giving identity to the block the idea of communal living of various generations is of special importance.

The idea of the former U-shaped perimeter building is carried on and reinterpreted. The backyard turns into a common inner courtyard, approx. 1 m above street level that forms the access to the building. Three openings link it to the surroundings. Generous staircases are joined directly to the openings and structure the building into five manageable units each containing 6 flats per level. Bulges in the galleries provide spaces of encounter for the inhabitants.

All flats have open areas that are directly accessible from the kitchens with views to the common courtyard. All flats are orientated to both sides. Because their layouts are configured with use-neutral rooms of 13 to 15 sqm, they can easily accommodate various forms of living. The L-shaped floor plans of the flats are combined with the structural requirements of the underground parking by changing the construction grid from the courtyard side (5,00 m – eat-in kitchen) to the street side (3,33 m – individual rooms). The ventilation recuperation system under the sloped roof (de)aerates the flats through centrally located shafts.

Housing Sillblock – Innsbruck / 2011

Project	WSI
Client	IIG - Innsbrucker Immobilien GmbH & CoKG
Status	EU-Open Competition
Budget	15.500.000 €
Site	4.845 m ²
Gross Building Area	19.775 m ²
Appartments	132
Living Area	8.080 m ²
Gross Building Vol.	57.903 m ³
Landscape	el:ch, Munich
Model	Steckmoling, Innsbruck

- 01 View along Sebastian-Scheel-Straße
- 02 View along the gallery with niches
- 03 Upper floors | All flats are orientated to both sides.